

LINCOLN AUSTIN

AS FAR AS I CAN SEE

LINCOLN AUSTIN

BIOGRAPHY

1974 Born Stirling, South Australia
Current Lives and works Ipswich, Queensland

STUDIES

1997–99 Diploma of Arts (Theatre Design), Centre for the Performing Arts, Adelaide
1993–94 Certificate in Applied and Visual Arts, Onkaparinga Institute, Adelaide

SOLO EXHIBITIONS

2009 *As Far as I Can See*, Andrew Baker Art Dealer, Brisbane
Field of Vision, Institute of Modern Art, Brisbane
2008 *Insideout*, Andrew Baker Art Dealer, Brisbane
2007 *Still Moving*, Andrew Baker Art Dealer, Brisbane
2005 *Relating the Matter*, Andrew Baker Art Dealer, Brisbane
Words Fail Me, Andrew Baker Art Dealer, Brisbane
2004 *Space Invaders and Time Machines*, Andrew Baker Art Dealer, Brisbane
2003 *Two*, Andrew Baker Art Dealer, Brisbane
2002 *Which Way Up?*, SOApBOx Gallery, Brisbane
1999 *Breakfast for Forty: Jewellery, Sculpture, Painting*, Chief Street Studio, Adelaide

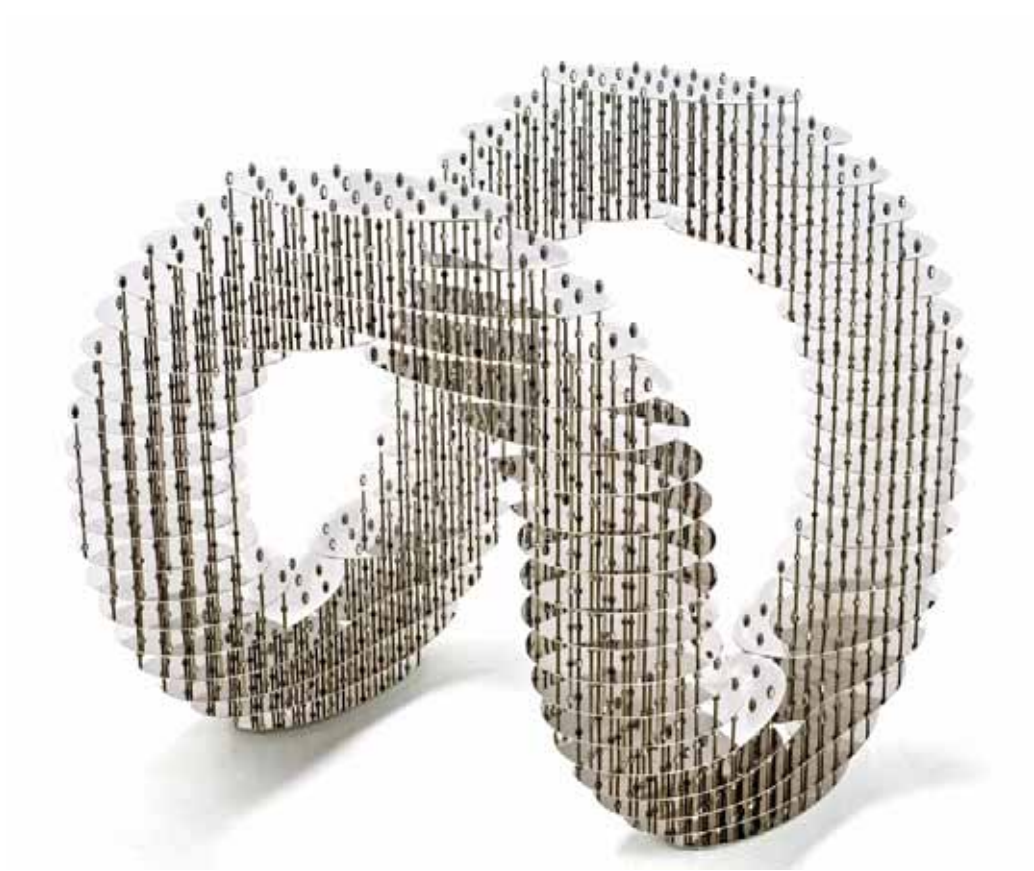
GROUP EXHIBITIONS

2009 *Spin*, QUT Art Museum, Brisbane
2008 *The Great Divide*, Artisan, Brisbane
Woollahra Small Sculpture Prize 2008, Woollahra Council Chambers, Sydney
Renault New Generation Art, Art Brisbane, Brisbane
2007 *20 Artists 20 Years*, Museum of Brisbane, Brisbane
Arc: Art, Design & Craft Biennial, QUT Art Museum, Brisbane
2006 *Artworkers Award: finalist exhibition*, Artworkers Alliance/Raw Space Galleries, Brisbane
2005 *Crates on Wheels*, Toowoomba Regional Gallery, Queensland, travelling to regional Queensland schools
2004–05 *Avalon: Artists in Residence*, Museum of Brisbane, Brisbane
2004 *The Unusual Suspects II*, Andrew Baker Art Dealer, Brisbane
2004 Conrad Jupiters Art Prize, Gold Coast City Art Gallery, Queensland
Space Invaders: Toowoomba Biennial Emerging Artists Award, Toowoomba Regional Gallery, Queensland

- 2003 *The Unusual Suspects*, Andrew Baker Art Dealer, Brisbane
The Churchie Emerging Art Exhibition, Anglican Church Grammar School, Brisbane
- 2000 *Stained Glass Window Design Competition*, St John's Cathedral, Brisbane
- 1999 *Expressions of Interest*, Centre for the Performing Arts, Adelaide
- 1996 *Nudes and Music*, Governor Hindmarsh Hotel, Adelaide
- 1995 *East and West*, Adelaide
Artery Party, Carclew Youth Art Centre, Adelaide
- 1992 *Miss Gladys Sim Chun*, Adelaide
- COMMISSIONS**
- 2009 *Once, Again*, Santos Place, Northbridge, 32 Turbot Street, Brisbane, Donovan Hill/Neilson Properties
Epificus, Morrisey Street Bridge, Woolloongabba, North-South Bypass Tunnel, EDAW/Brisbane City Council
Openended, Ipswich Magistrates Court, Ipswich, Cox Rayner Architects/Ipswich City Council
- 2007 *Spun*, Southbank Institute of Technology, Ernest Street, South Brisbane, Cox Rayner Architects/John Holland Group
- 2006 *When the Stars Come Out*, Festival Towers, Brisbane, Cox Rayner Architects/Devine
- 2005 *Where were we?*, Casino Towers, Brisbane, Cox Rayner Architects/Devine
- 2003 Christmas decorations, Gallery Store, Queensland Art Gallery, Brisbane
Christmas decorations, Stelios Papas, Brisbane
- 2002 Christmas decorations, Gallery Store, Queensland Art Gallery, Brisbane
Kinetic Christmas decorations, Stelios Papas, Brisbane
- 2001 Christmas decorations, Stelios Papas, Brisbane
- 2000 1:50 Venue models, Adelaide Festival, Adelaide
- 1998 1:43 Drive-in cinema model, *Holden Exhibition*, State Library of South Australia, Adelaide
- 1997 Stage props, *Don Pasquale*, State Opera of South Australia, Adelaide

PUBLIC COLLECTIONS

Artbank, Sydney
Queensland University of Technology, Brisbane
The University of Queensland, Brisbane
Toowoomba Regional Gallery, Queensland
KPMG, Brisbane



EVAPORATION AND PRECIPITATION (2009)

Stainless steel
60 x 56 x 60 cm
\$16,500



A PREGNANT PAUSE (2009)

Stainless steel
69 x 55 x 52 cm
\$16,500

Sold



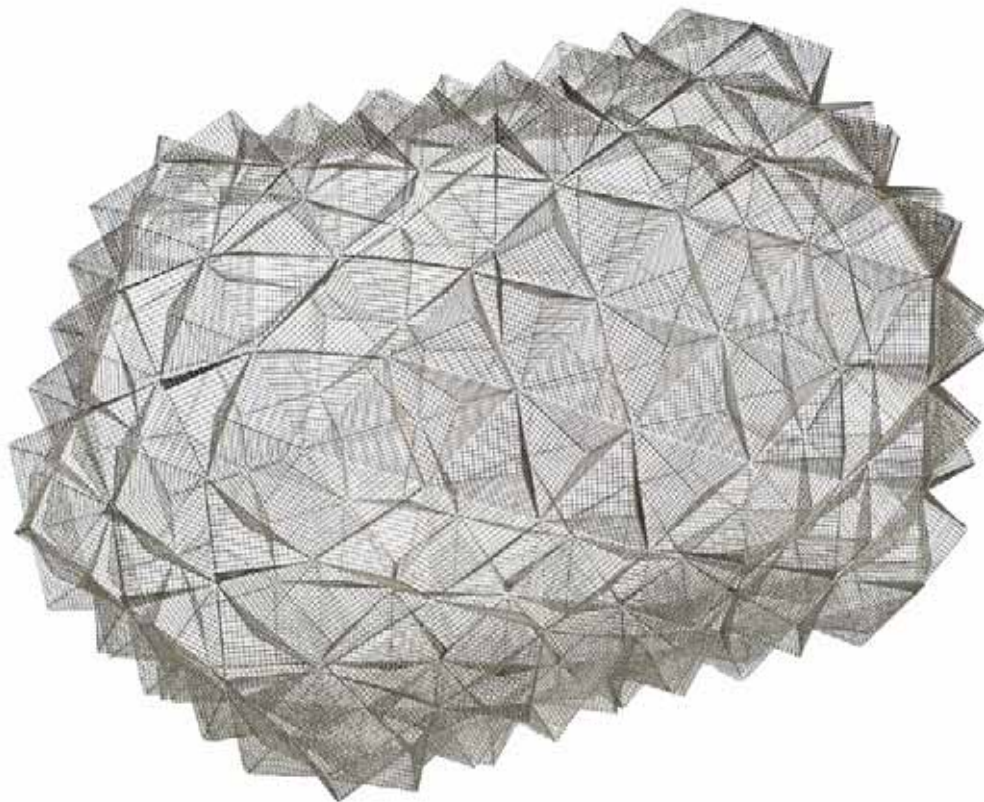
LOW FREQUENCY OSCILLATOR (2009)

Stainless steel
52 x 78 x 43 cm
\$16,500

Sold

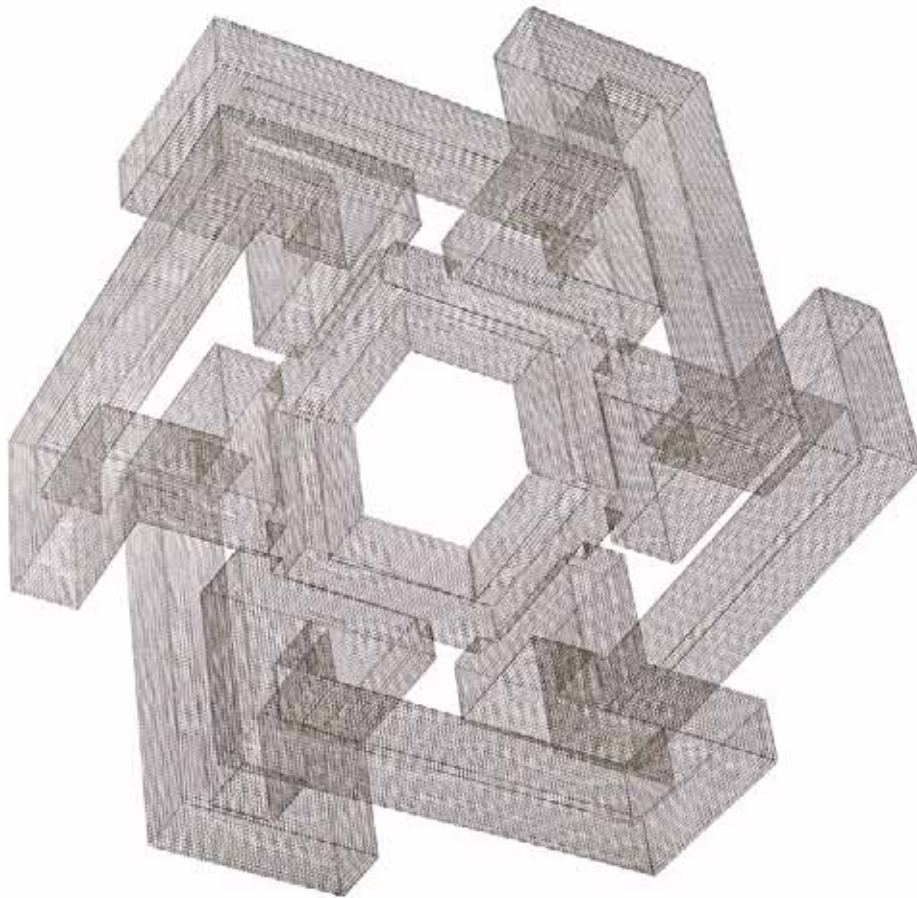


ARRAY (2009)
Stainless steel
150 x 75 x 45 cm
\$11,000



ATMOSPHERIC PERSPECTIVE (2009)

Stainless steel
144 x 96 x 96 cm
\$11,000



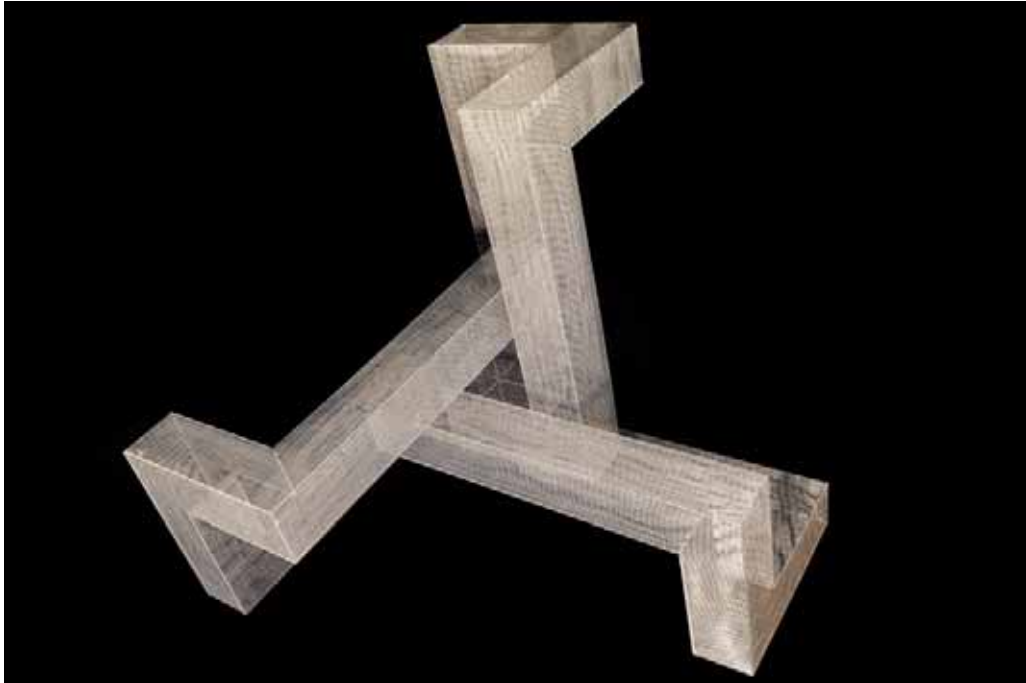
WHICH THE I SAW (2009)

Stainless steel

121 x 135 x 65 cm

\$11,000

Sold

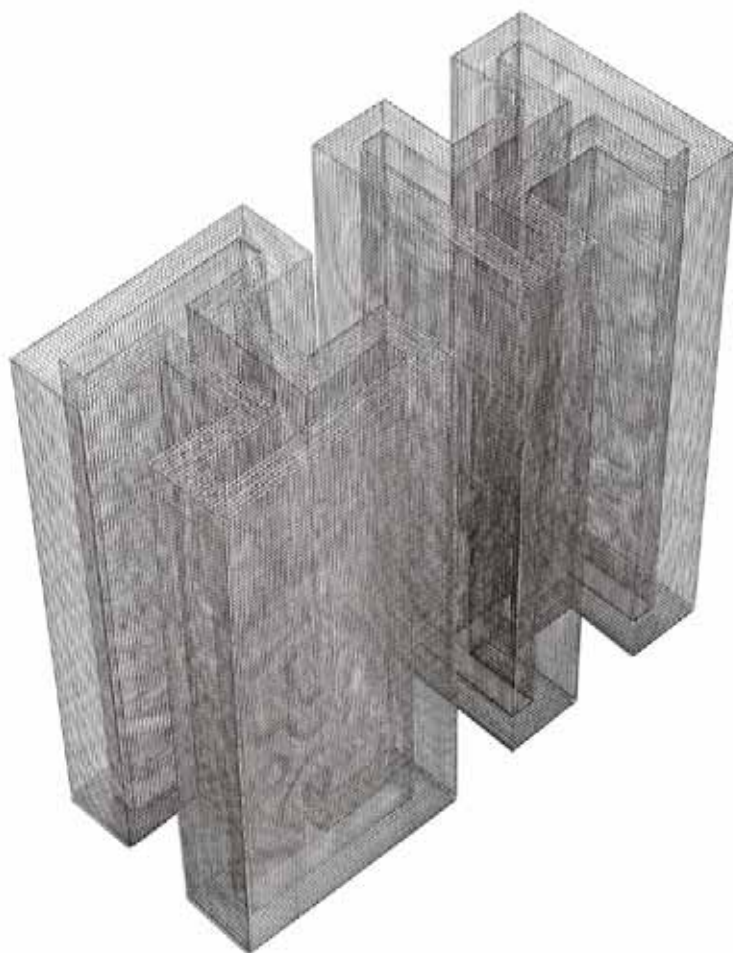


KNOT WITHSTANDING (2009)

Stainless steel mesh

117 x 181 x 154 cm

\$11,000



TRUNCATED I BEAM (2009)

Stainless steel

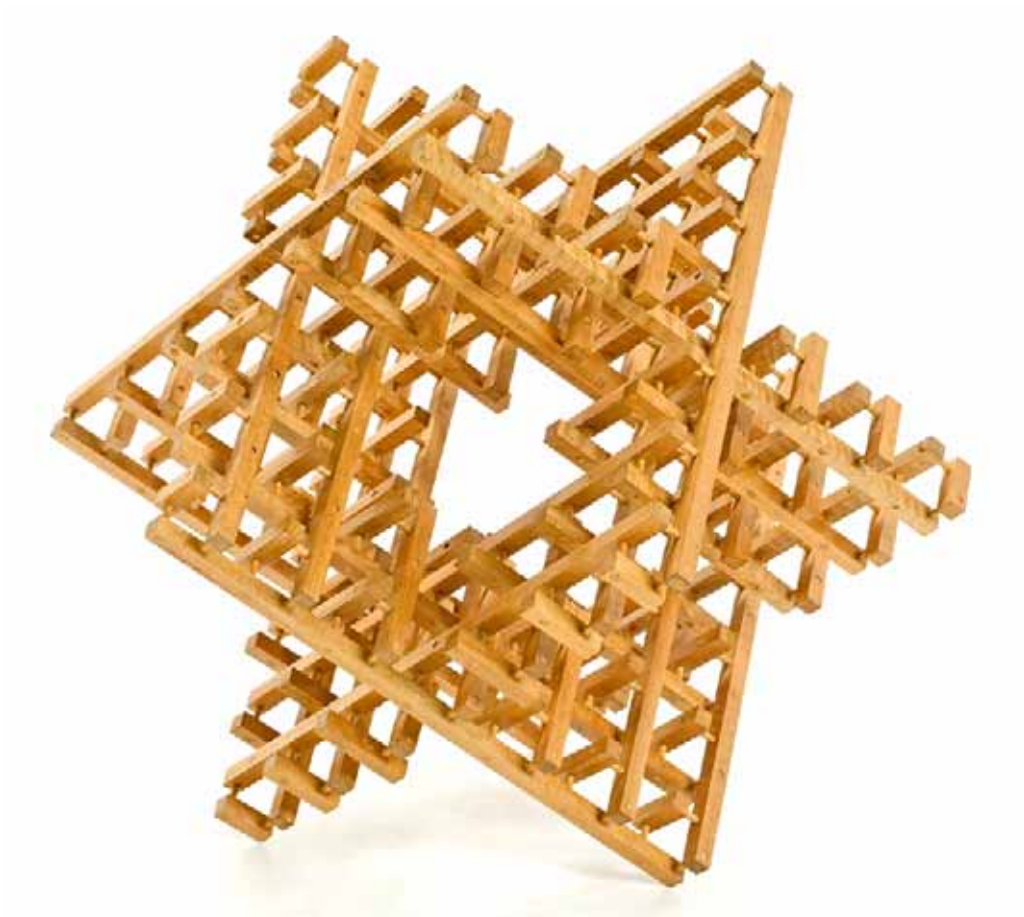
40 x 90 x 40 cm and 40 x 92 x 40 cm

\$8,800



REFLECTING ON THE SQUARE (2008)

Stainless steel
73 x 56 x 57 cm
\$5,500



TWINKLE TWINKLE ... (2001)

Queensland maple, oak

93 x 78 x 78 cm

\$5,500



IF THE RADIANCE OF A THOUSAND SUNS WERE TO BURST AT ONCE INTO THE SKY (2009)

Antique Japanese silk, plywood, nylon, stainless steel, wood, glass, brass

59 x 23 x 23 cm

\$6,600



APPROACHING CRITICAL MASS (2009)

Brass, copper, enamel paint, wood, glass

32 x 22 x 14 cm

\$5,500

Sold



ONE THING LEADS TO ANOTHER (2009)

Stainless steel, wood, glass, brass

20 x 20 x 20 cm

\$5,500

Sold



BRAINWAVE [THETA] (2009)

Plaster, pigment, beeswax, wood, glass, brass

27 x 19 x 19 cm

\$5,500

Sold



IN YOUR OWN TIME (2009)

Sterling silver, wood, glass, brass

22 x 16 x 16 cm

\$4,400

Sold



CAUGHT IN A CLOUD (2009)

Balsa wood, gesso, enamel paint, wood, glass, brass

22 x 14 x 14 cm

\$4,400

Reserved



IN THE MIDST (2009)

Stainless steel, plywood, wood, glass, brass

22 x 14 x 14 cm

\$4,400

Sold



PEELED (2009)

Wood, beeswax, glass, brass

22 x 19 x 19 cm

\$4,400

Sold

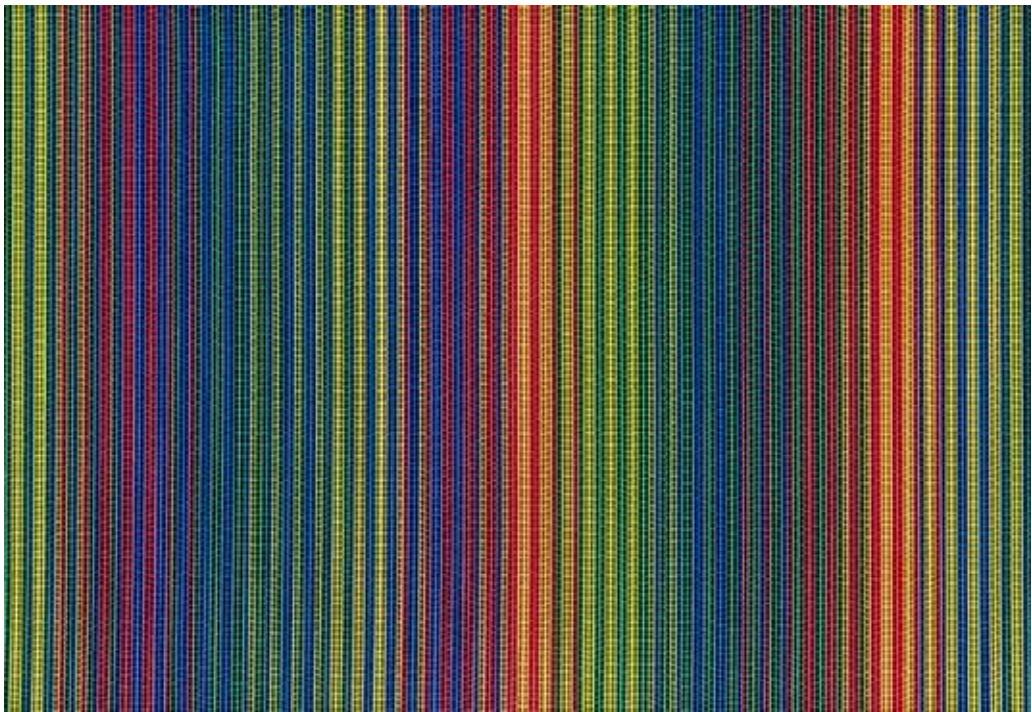


TRANSFORMER (2009)

Plastic magnifying sheet, stainless steel, wood, glass, brass

22 x 16 x 16 cm

\$4,400

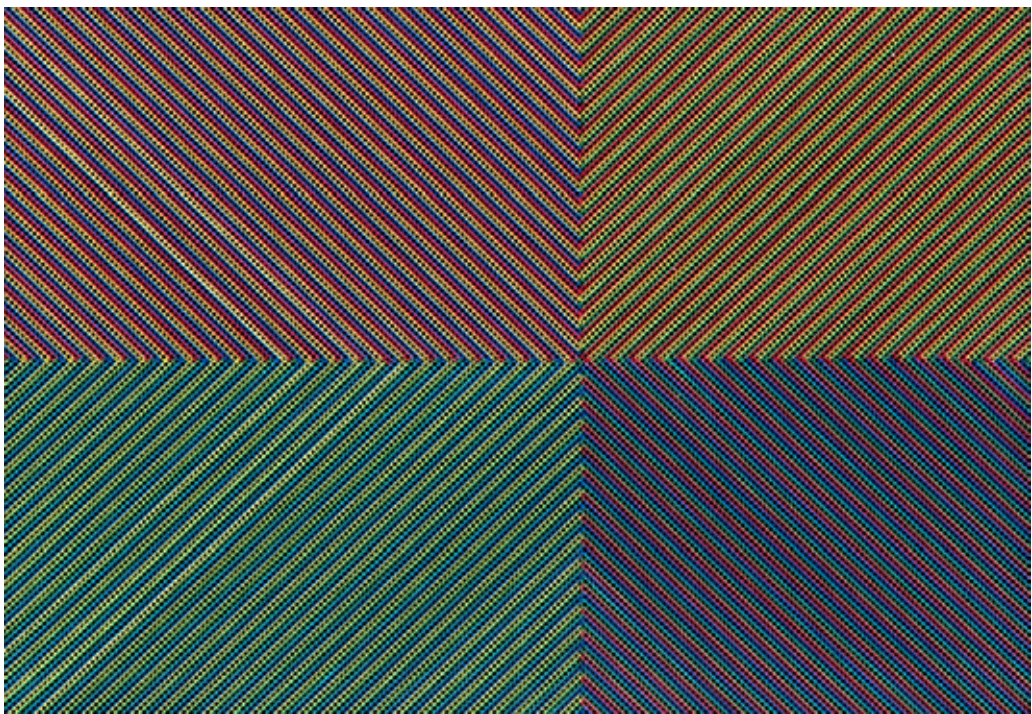


TEST PATTERN I (2009)

Corflute®, matt board

41 x 58 x 1 cm

\$1,980



TEST PATTERN II (2009)

Corflute®, matt board

41 x 58 x 1 cm

\$1,980

Sold



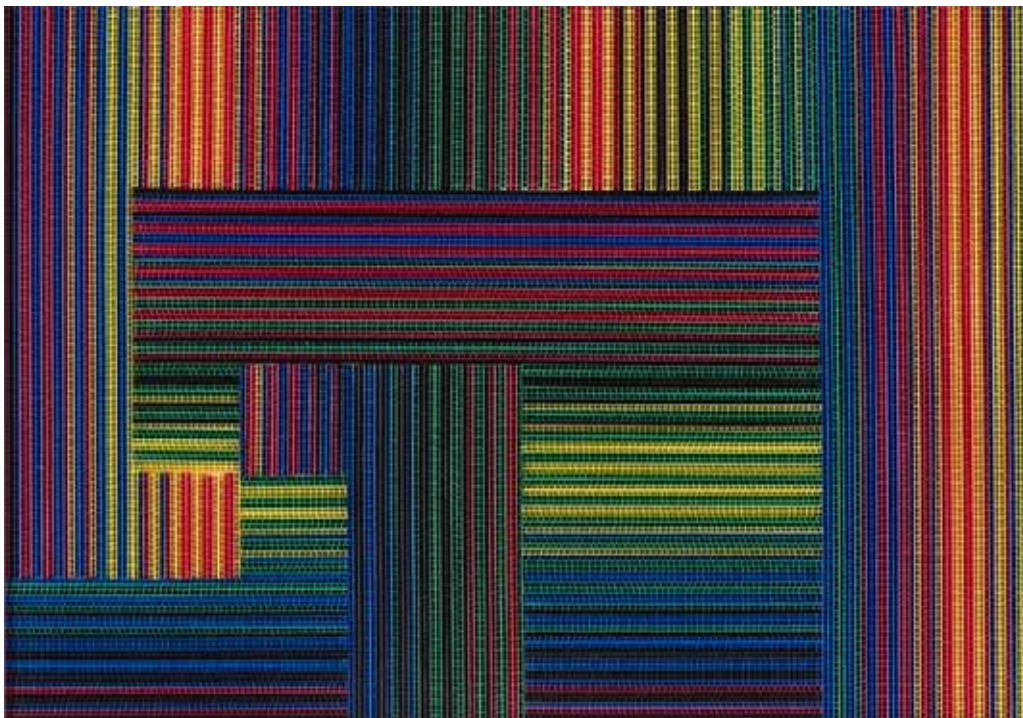
TEST PATTERN III (2009)

Corflute®, matt board

41 x 58 x 1 cm

\$1,980

Sold

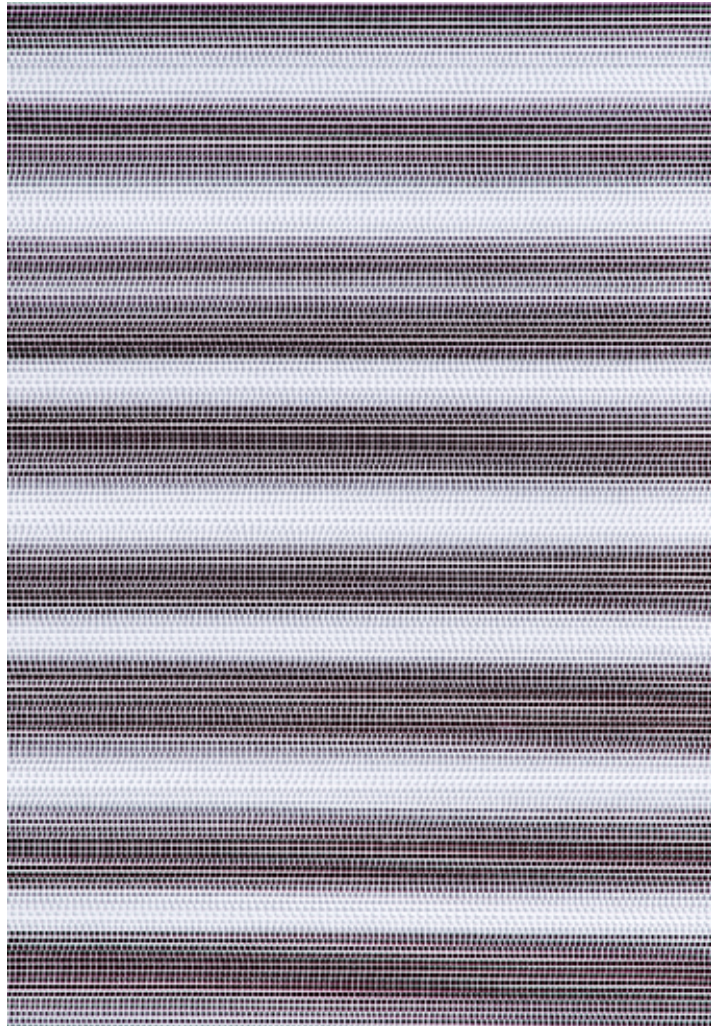


TEST PATTERN IV (2009)

Corflute®, matt board

41 x 58 x 1 cm

\$1,980



TEST PATTERN V (2009)

Corflute®, matt board

41 x 58 x 1 cm

\$1,980

Sold

Andrew Baker Art Dealer

26 Brookes Street • Bowen Hills Qld 4006

07 3252 2292 • 0412 990 356

info@andrew-baker.com • www.andrew-baker.com

